

OUTDOOR KITCHEN TRIM KIT INSTALLATION GUIDE

READ ALL INSTRUCTIONS BEFORE INSTALLING AND USING YOUR TRAEGER® GRILL.

IMPORTANT: Please read this Installation Guide and your Grill Assembly Guide and Owner's Manual before installation and use of your Traeger® Grill. Failure to follow the instructions in this Installation Guide and your Grill Assembly Guide and Owner's Manual could result in property damage, bodily injury, or even death.

Contact local building or fire officials about restrictions and installation inspection requirements in your area. Save these instructions. If you are assembling this trim kit for someone else, provide this Installation Guide for the owner to read and save for future reference.

IMPORTANT SAFETY PRECAUTIONS

⚠️ WARNING Fire Hazard

- When operating your Traeger® Grill, maintain a MINIMUM distance of 20 inches (50.8 cm) from the grill to any nearby combustibles, including wooden railings, home siding, window frames, furniture, trees, and trash receptacles, etc.
- Do not install or operate this grill indoors or under a combustible ceiling or overhang.
- Do not install or operate your Traeger® Grill on combustible floors or surfaces.
- Do not put a grill cover or anything flammable in the storage space area under the grill.

⚠️ WARNING Electrical Shock Hazard

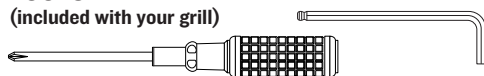
Hazardous voltage is present, which can shock, burn, or cause death.

- Ground Fault Circuit Interrupter (GFCI) protection must be provided on the circuit(s) or outlet(s) to be used for the operation of this Traeger® Grill.
- If using an extension cord, only use an extension cord suitable for outdoor use to prevent electric shock in accordance with the instructions and warnings accompanying that product.
- Do not modify the plug on your Traeger® Grill, the extension cord receptacle, or the extension cord plug in any way, including by removing the ground (earth) prong.
- Keep extension cord clear of snow and standing water.
- Ensure that the power cord and extension cord do not create a tripping hazard.
- When not in use, the extension cord should be removed and stored in a location protected from the sun and out of the reach of children.

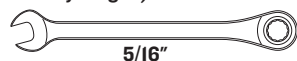
⚠️ CAUTION Grill is very heavy. Always lift the grill with two people.

TOOLS NEEDED

(included with your grill)



(not included with your grill)



5/16"

TOOL RECOMMENDED (not included with your grill)



HARDWARE INCLUDED

- Kickplate
- 4 foot brackets
- 4 leveling feet
- 2 screws with large washers (Screw Set A)

SPARE PARTS

- 5 screws and washers

WE'RE JUST A SCAN AWAY



Traeger Support



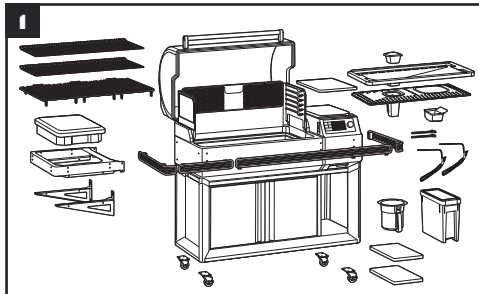
Grill Assembly Guide



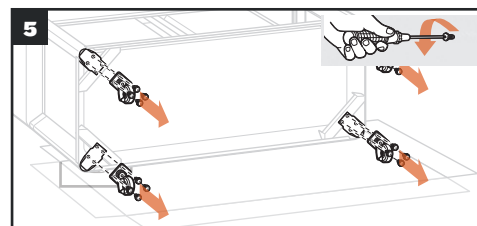
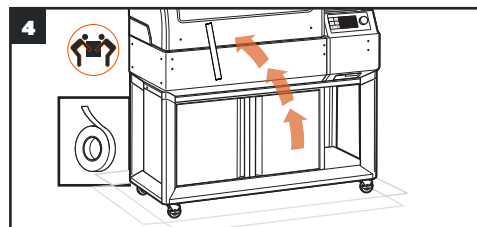
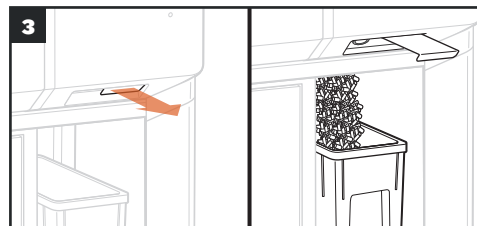
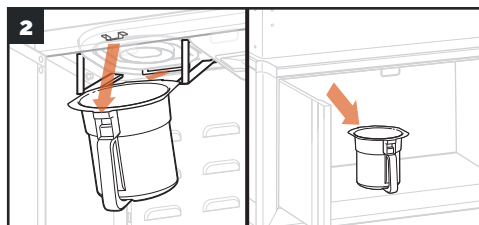
Grill Owner's Manual

INSTALLING ASSEMBLED GRILLS

IMPORTANT: Unplug grill before disassembly.



Remove everything from inside the grill, including all internal components (grill grates, drip tray, EvenFlow™ Heat Shield, grease governor, and firepot), pots and pans, and food. Clean the entire grill, including any grease accumulation from the Traeger® Grease Management System (TGMS) and all ash and pellets from the grill and firepot (see "Maintaining Your Grill" in your Grill Owner's Manual). (Casters can only be removed after Step 4).



NOTE: Save these screws for assembling the trim kit. If screws are damaged, spares are included in spare parts bag.

6 Attach leveling feet and kickplate (see "Installing Unassembled Grills" section).

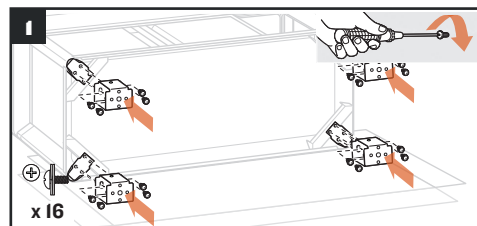
NOTE: Use Screw Set A to attach kickplate. Leave screws loose until all screws are placed, then tighten to finish.

7 Reassemble by referring to your Grill Assembly Guide.

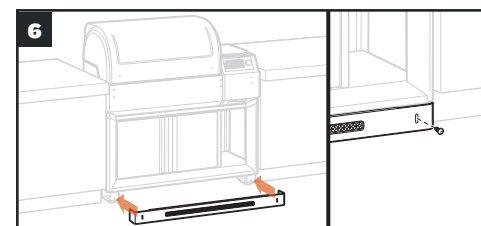
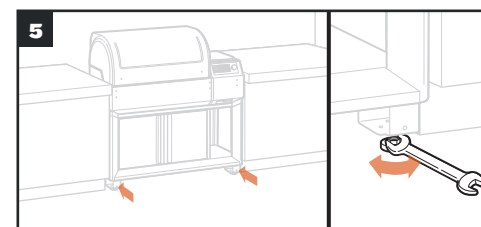
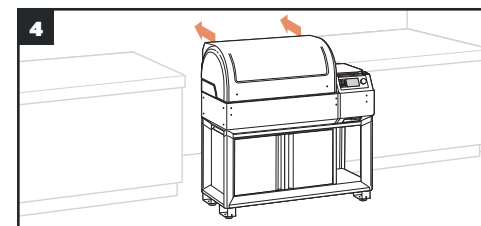
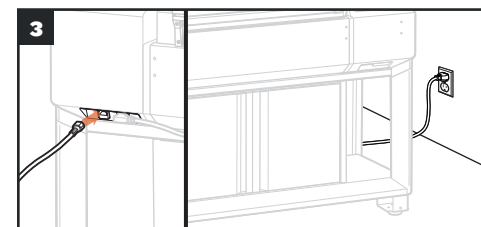
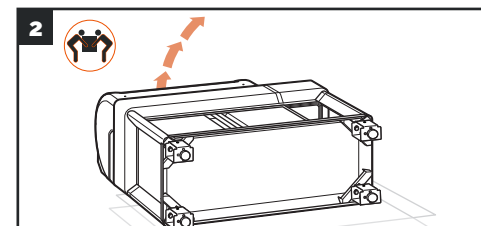
INSTALLING UNASSEMBLED GRILLS

After step 6 in your Grill Assembly Guide, refer to the instructions below:

NOTE: A 6 ft extension cord is included for the Induction Cooktop for counter installation.



Leave screws loose until all screws are placed, then tighten to finish. Install leveling feet after brackets are attached.



7 Refer to your Grill Assembly Guide to complete assembly of your grill.

IT GUIDA ALL'INSTALLAZIONE DEL KIT PER CUCINE ESTERNE

**IMPORTANTE: CONSERVARE PER
CONSULTAZIONE FUTURA. LEGGERE
ATTENTAMENTE.**

Per le istruzioni in italiano, visita il sito traeger.com
o scansiona il codice QR.

PT GUIA DE INSTALAÇÃO DO KIT DE RECORTE DE COZINHA EXTERIOR

**IMPORTANTE: GUARDAR PARA CONSULTAS
FUTURAS. LER ATENTAMENTE.**

Para obter instruções em português, acesse
traeger.com ou escaneie o código QR.

ES GUÍA DE INSTALACIÓN DEL KIT DE MOLDURAS DE COCINA AL AIRE LIBRE

**IMPORTANTE: CONSERVE PARA FUTURAS
CONSULTAS. LEA CUIDADOSAMENTE.**

Para obtener instrucciones en español, visite el
sitio web traeger.com o escanee el código QR.

NL BUITENKEUKEN TRIMKIT INSTALLATIEGIDS

**BELANGRIJK: BEWAREN VOOR
TOEKOMSTIGE REFERENTIE.
LEES AANDACHTIG.**

Voor instructies in het Nederlands, ga naar
traeger.com of scan QR code.

SV MONTERINGSANVISNING FÖR KÖKSINSTALLATION (UTOMHUSBRUK)

**VIKTIGT: SPARA FÖR FRAMTIDA BRUK.
LÄS NOGGRANT.**

För instruktioner på svenska, gå till traeger.com
eller skanna QR-koden.

NO MONTERINGSVEILEDNING LISTESETT FOR UTEKJØKKEN

**VIKTIG: BEHOLDES TIL SENERE BRUK.
LESES NØYE.**

For instruksjoner på norsk, se traeger.com eller
skann QR-koden.

DA MONTERINGSVEJLEDNING TIL MONTERINGSSÆT TIL UDENDØRS KØKKEN

**VIGTIGT: GEM TIL FREMTIDIG REFERENCE.
LÆS OMHYGGELIGT.**

For anvisninger på dansk, gå til traeger.com eller
scan QR-kode.

FI TRIM KIT -ULKOKKEITTIÖN ASENNUSOPAS

**TÄRKEÄÄ: SÄILYÄ MYÖHEMPÄÄ
TARVETTA VARTEN. LUE HUOLELLISESTI.**

Löydät suomekieliset ohjeet osoitteessa traeger.com
tai skannaamalla QR koodin.

IS UPPSETINGARLEIÐBEININGAR FYRIR ÚTIELDHÚSSETT

**MIKILVÆGT: GEYMIÐ FYRIR NOTKUN
SÍÐAR. LESIST VANDLEGA.**

Til að sjá íslenskar leiðbeiningar, farið á traeger.com
eða skannið QR-kóðann.

EL KIT ΜΟΝΑΔΑΣ ΓΙΑ ΚΟΥΖΙΝΕΣ ΕΞΩΤΕΡΙΚΟΥ ΧΩΡΟΥ ΟΔΗΓΟΣ ΕΓΚΑΤΑΣΤΑΣΗΣ

**ΣΗΜΑΝΤΙΚΟ: ΔΙΑΤΗΡΗΣΤΕ ΓΙΑ ΜΕΛΛΟΝΤΙΚΗ
ΑΝΑΦΟΡΑ. ΔΙΑΒΑΣΤΕ ΠΡΟΣΕΚΤΙΚΑ.**

Για οδηγίες στα Ελληνικά, επισκεφτείτε την traeger.com ή
σαρώστε τον κωδικό QR.

ET VÄLIKÕÕGI SISUSTUSKOMPLEKTIDE PAIGALDAMISJUHEND

**TÄHTIS. SÄILITAGE
EDASPIDISEKSKASUTAMISEKS. LUGEGE
HOOLIKALT LÄBI.**

Eestikeelsete juhiste saamiseks minge aadressile
traeger.com või skannige QR-kood.

LT LAUKO VIRTUVĖS APDAILOS RINKINIO MONTAVIMO VADOVAS

**SVARBU: IŠSAUGOKITE, KAD
GALĖTUMĖTE PASINAUDOTI VĖLIAU.
ATIDŽIAI PERSKAITYKITE.**

Norėdami skaityti instrukcijas lietuvių kalba, eikite į
traeger.com arba nuskenaukite QR kodą.

LV DEKORATĪVĀS LĪSTES ĀRA VIRTUVEI UZSTĀDĪŠANAS PAMĀCĪBA

**SVARĪGI: SAGLABĀJIET TURPMĀKAI
UZZIŅAI. RŪPĪGI IZLASIET.**

Lai skatītu norādījumus latviešu valodā, dodieties
uz tīmekļa vietni traeger.com vai noskenējiet
QR kodu.

ערכת אבזור (trim kit) למטבח חוץ מדריך התקנה **HE**

חשוב: שמור לצרכי עיון בעתיד.
קרא היטב.

להוראות בעברית, בקר ב- traeger.com או סרוק
את קוד QR.

دليل تركيب مجموعة أدوات المطبخ الخارجية **AR**

معلومة مهمة: احتفظ به للرجوع إليه في المستقبل.
اقرأ بعناية.

للحصول على إرشادات باللغة العربية، قم بزيارة
traeger.com أو امسح رمز الاستجابة السريعة.

